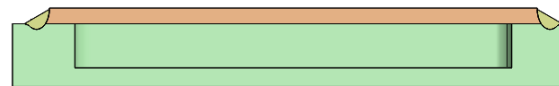
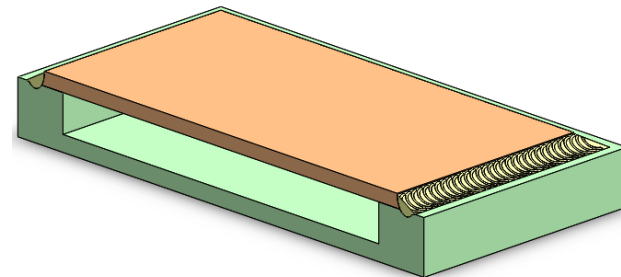
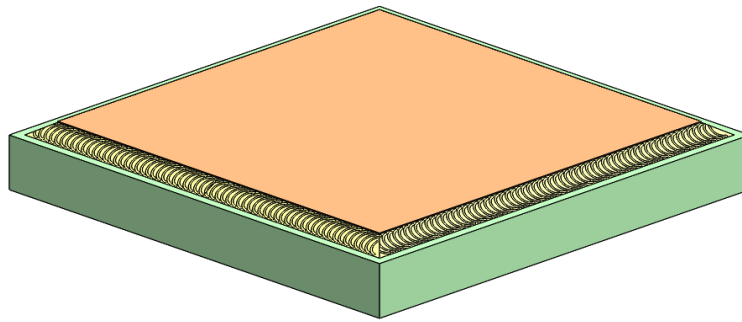




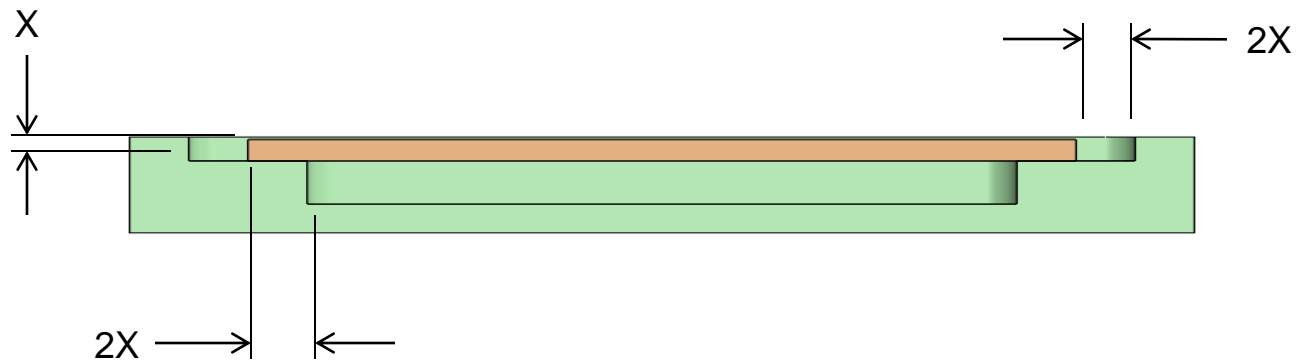
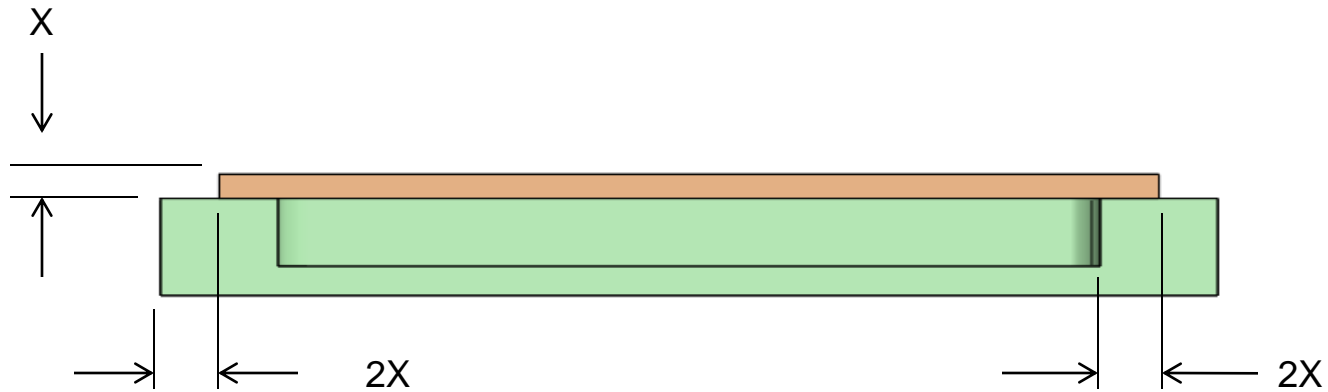
## Design Guidelines for Hermetic Laser Welding Updated 8-10-14

(First published at SME Conferences in San Jose CA April 29<sup>th</sup> 1986 and Bedford MA Dec. 1<sup>st</sup> 1988)

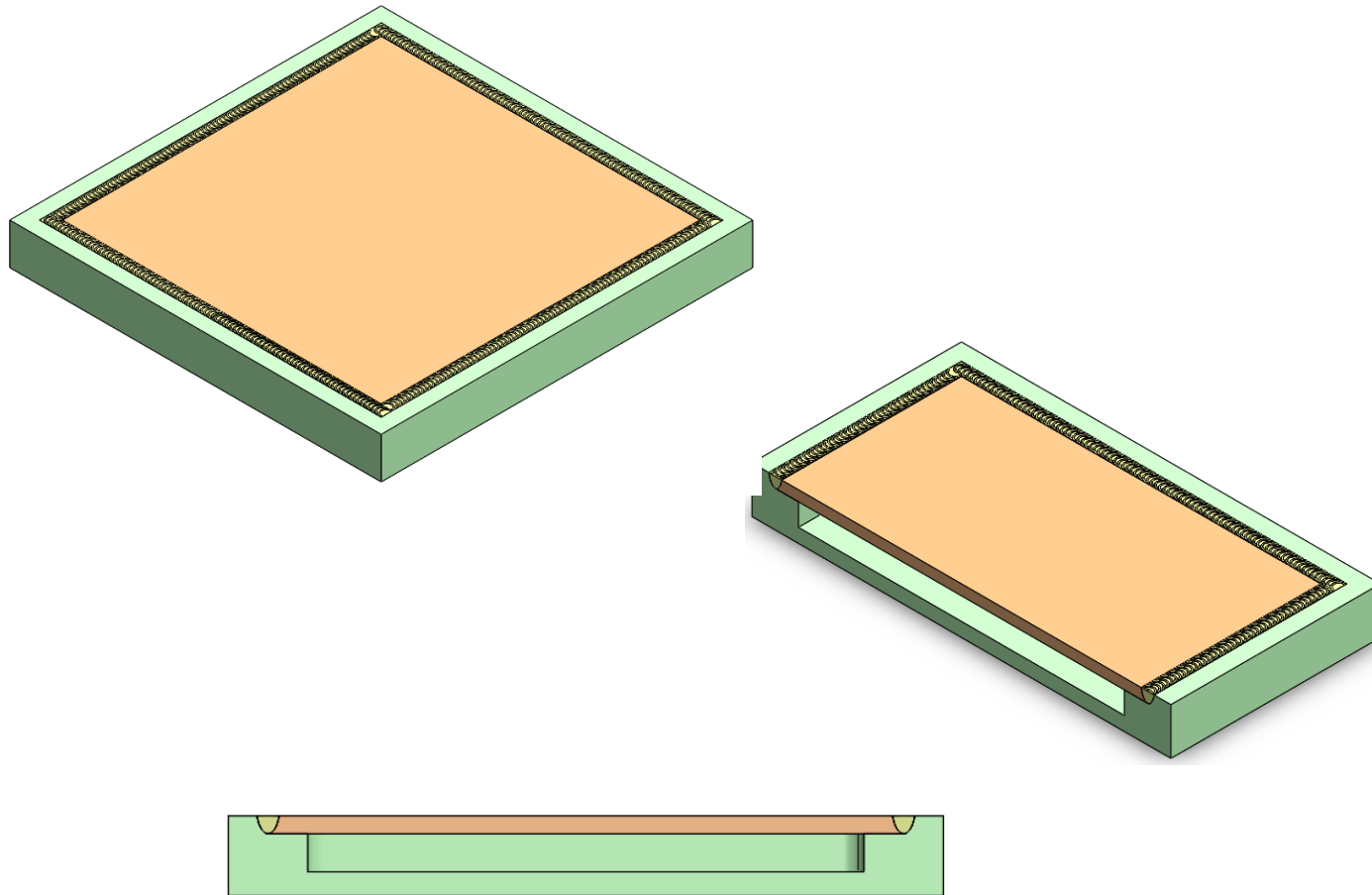
# FILLET WELD



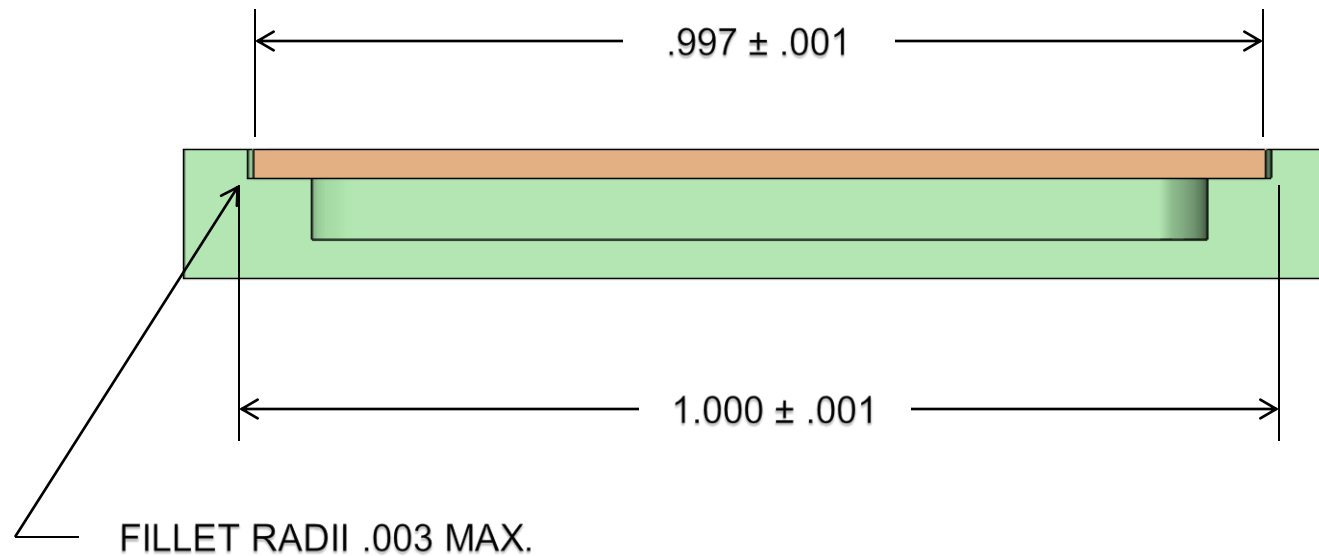
# FILLET WELD DESIGN CRITERIA



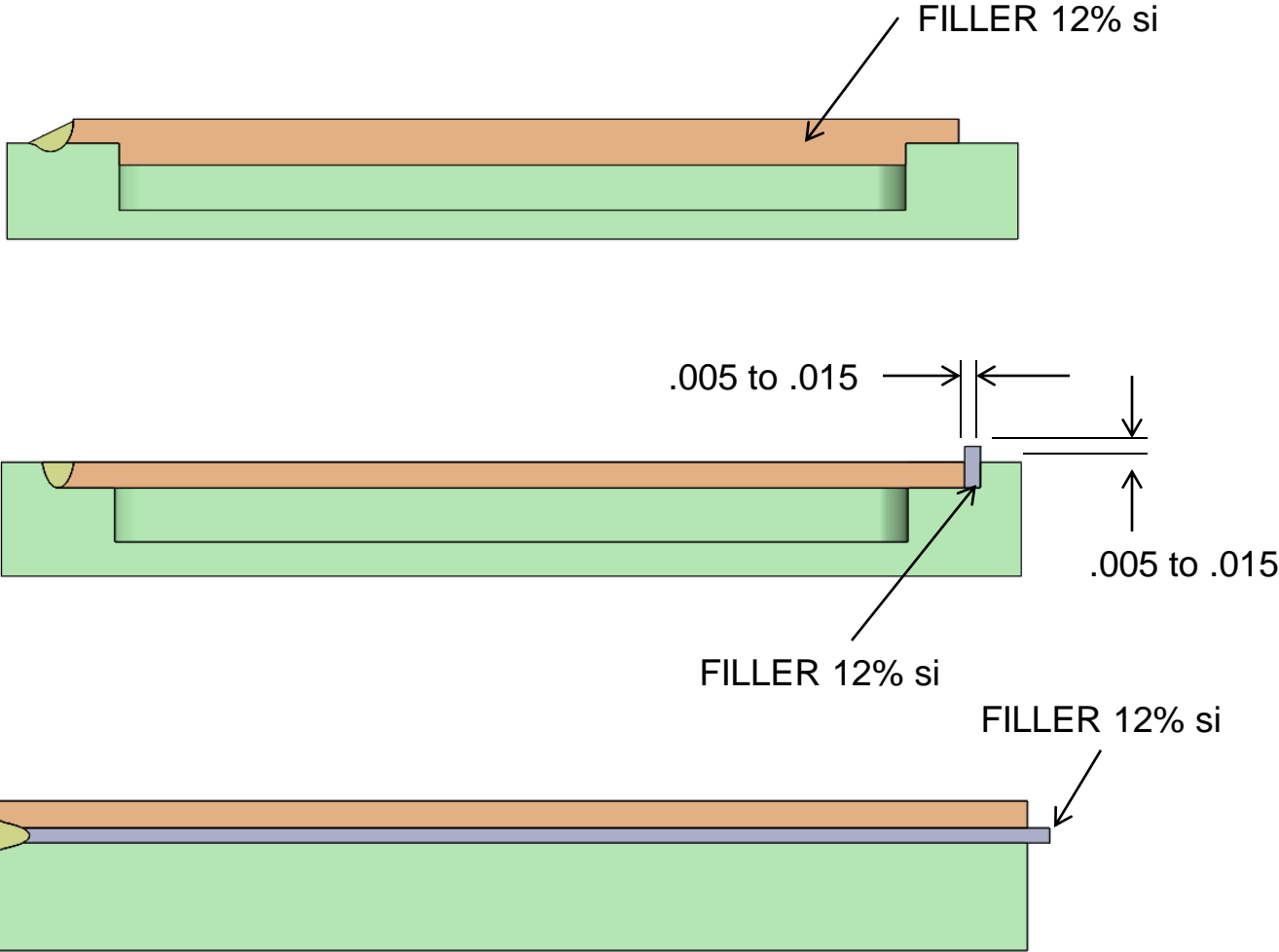
# BUTT WELD-DROP IN COVER



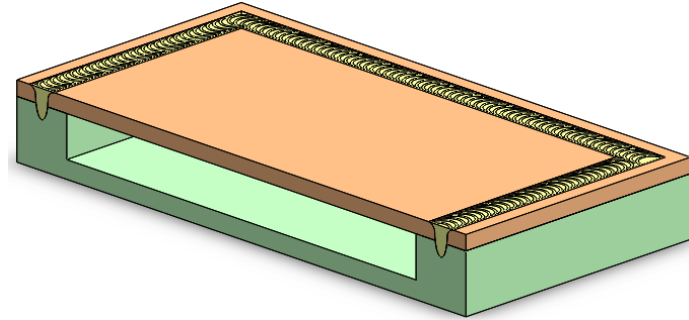
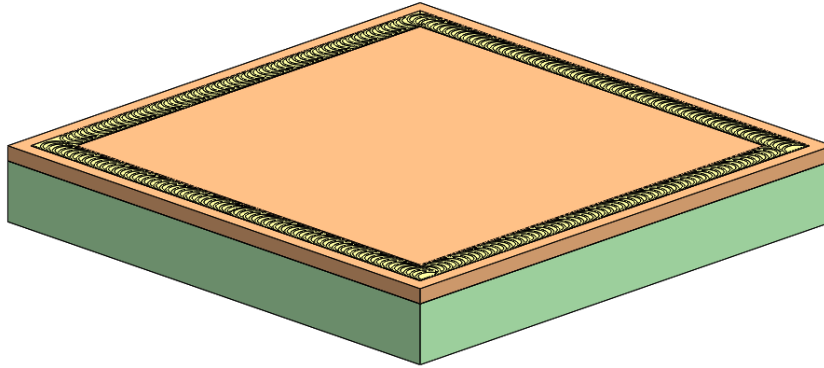
# BUTT WELD DESIGN CRITERIA



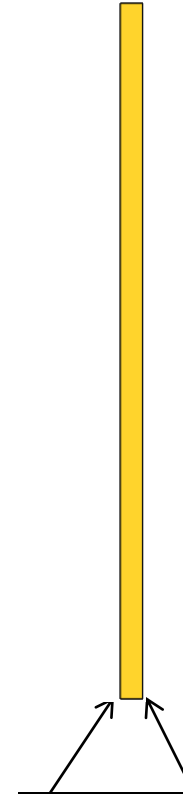
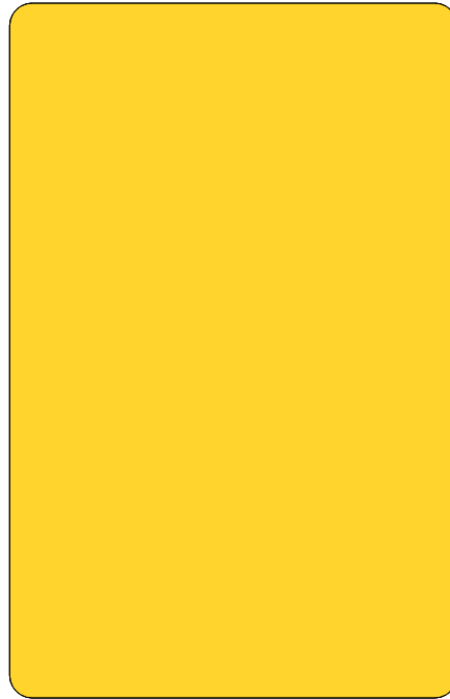
# Aluminum Housing Using Filler Material



# LAP WELDS



# TYPICAL COVER

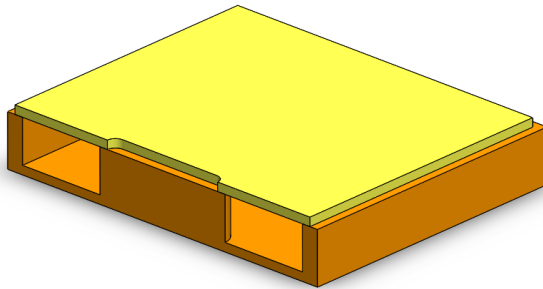
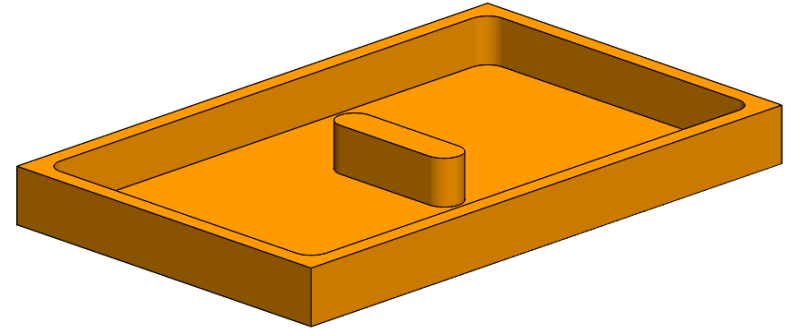
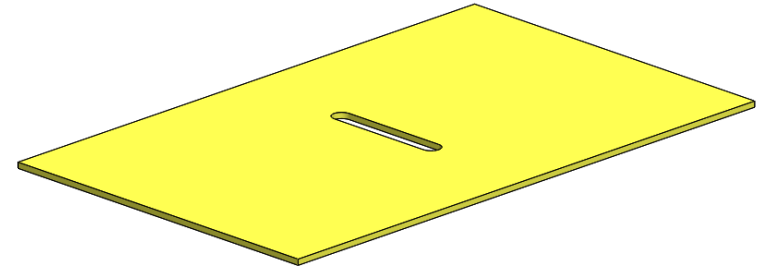
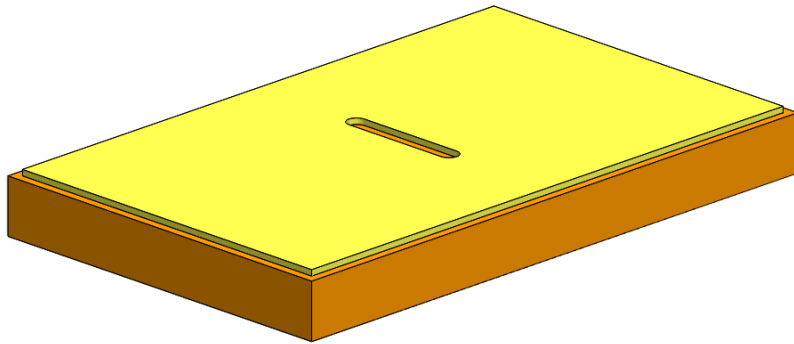


**LEAVE EDGES  
SHARP – 8 PLACES**

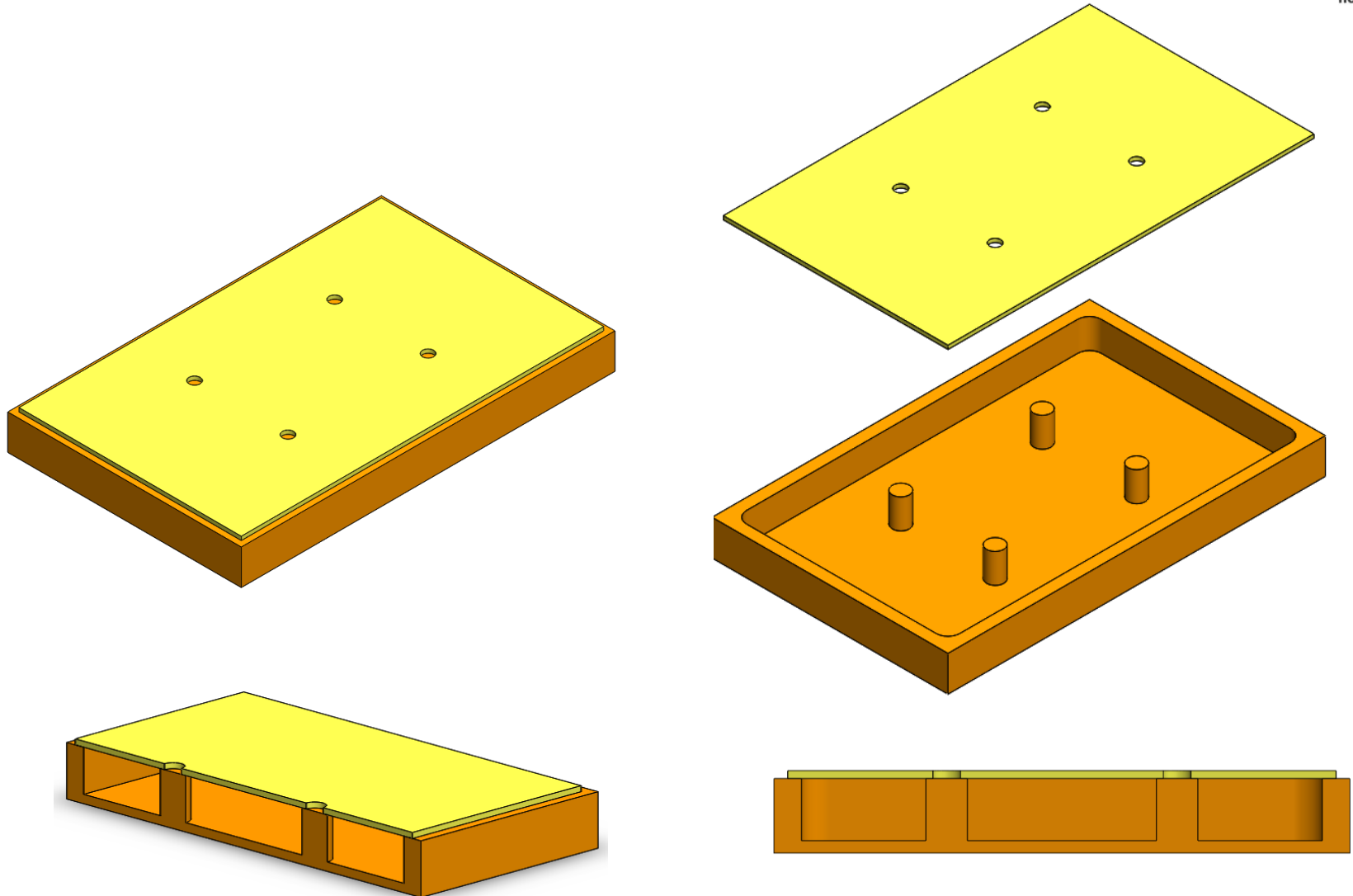


# Cover Deflection Prevention and Isolation Options

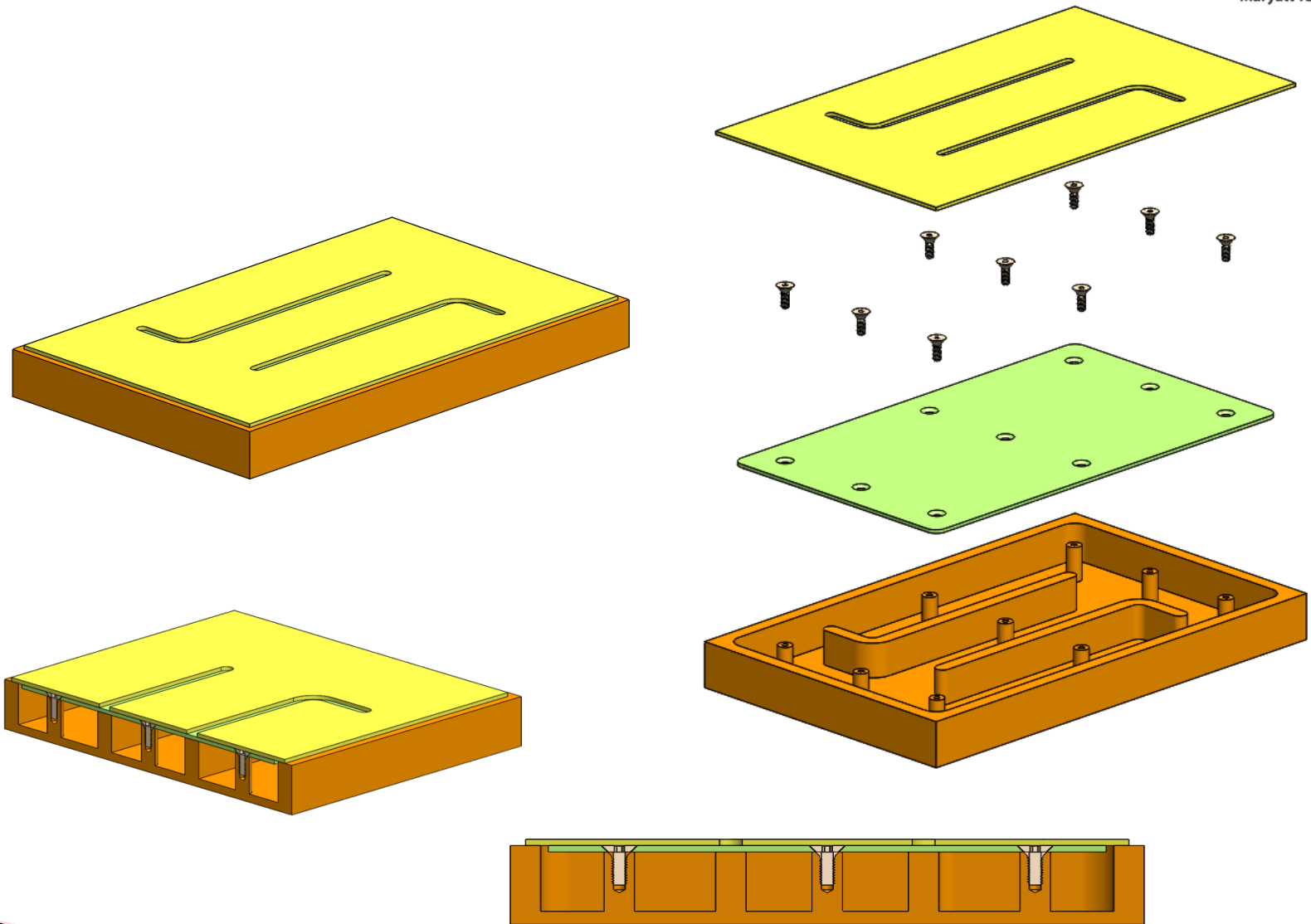
## INTERNAL WALLS



# INTERNAL POSTS



# INTERNAL COVERS



# THREADED NAIL HEADS

